



**Wrockwardine Wood Infant
School and Nursery**

Newsletter

'Love, Laugh, Learn'



14 September 2025. Autumn Term. Week 1 and 2

A Message from the Headteacher

Dear Parents and Carers,

What a busy and exciting start to the term!

It has been a wonderful first two weeks back at school, and I have been delighted with how well the children have settled into their new learning environments.

This term, the children have been introduced to our new behaviour expectation characters:

- Alfie Alligator – We are kind
- Ella Elephant – We work hard
- Louie Lion – We are honest

Each character comes with lovely stories to help bring these values to life, and the children are already beginning to use them in their daily learning and play.

We have a packed newsletter for you today, full of key dates and lots of important information for the term ahead. These dates will also be available on our brand-new school website, which we're excited to launch in just a couple of weeks.

Mrs Jenny Gascoigne
Executive Headteacher



**English as an
Additional Language**
**Is your child exposed
to another language at
home?**

Please see page 11





Autumn Key Dates

September

September 2025

◀ month week ▶

Mon	Tue	Wed	Thu	Fri	Sat	Sun
1	2 Autumn Term commences	3	4	5	6	7
8	9	10	11	12	13	14 Sparrows Parent/Carer/Teach Consultations
15 Eco Warriors Nomination (Eco School Award) PODs Coffee Afternoon 2:15 pm in the school hall	16 Year 1 Meet the teacher. 2:30pm in the school hall	17 Year 2 Meet the teacher. 2:30pm in the school hall Wrens Parent/Carer School Lunch 11:45am arrival	18 Edgmond Hall Residential Parent Meeting. 8:45am and 5:30pm in the school hall Reception Meet the Teacher. 2:30pm in the school hall	19 Sparrows Meet the Teacher. 2:30pm in the HT office	20	21
22 Harvest Donations from today - thank you	23	24 Robins and Sparrows Parent/Carer Lunch 11:45am arrival	25 Year 2 Educational Visit to Ironbridge	26	27	28
29	30	1 Black History Month starts today	2 Swifts Parent/Carer Lunch. 11:45am arrival Census day - Pizza Buffet Lunch	3	4	5
6 Chinese Festival of the Harvest Moon Africa Dance Workshops. More info to follow	7	8 Tempest School Photos. More info to follow Swallows Parent/Carer Lunch	9 Harvest Festival at the Church. Children only	10 World Mental Health Day - Children invited to wear green	11	12



Autumn Key Dates

October

October 2025

◀ month week ▶

Mon	Tue	Wed	Thu	Fri	Sat	Sun
29	30	1 Black History Month starts today	2 Swifts Parent/Carer Lunch. 11:45am arrival Census day -Pizza Buffet Lunch	3	4	5
6 Chinese Festival of the Harvest Moon Africa Dance Workshops. More info to follow	7	8 Tempest School Photos. More info to follow Swallows Parent/Carer Lunch	9 Harvest Festival at the Church. Children only	10 World Mental Health Day - Children invited to wear green	11	12
13	14	15	16	17	18	19
20 Diwali Festival. Diwali Workshops. More info to follow Talk Pants Week	21 Year 2 Residential to Edmond Hall Pantosaurus Visiting School (Part of Talk Pants Week)	22	23 Reception Parent/Carer/Teacher Consultations. More info to follow	24 Break up for October Half term	25	26
27	28	29	30	31	1	2
October Half Term						



Autumn Key Dates

November

November 2025

◀ month week ▶

Mon	Tue	Wed	Thu	Fri	Sat	Sun
27	28	29	30	31	1	2
October Half Term						
3 Children Return to school/Nursery Talk Money Week	4 Sparrows Parent/Carer/Teacher Consultations	5 Bonfire Night Year 1 Parent/Carer/Teacher Consultations. More info to follow	6 Year 2 Parent/Carer/Teacher Consultations. More info to follow	7	8	9
10 The Nest Stay and Play this Week. More info to follow	11 Remembrance Day	12	13	14	15	16
17 Odd Sock Day - Children to wear odd socks to school Anti-Bullying Week	18 Reception - Year 2 Nasal Flu Vaccination. More info to follow	19	20 Year 1 Educational Visit to Blists Hill. More info to follow	21	22	23
24 PODs Coffee Afternoon. 2:15pm at Wrockwardine Wood Junior School Road Safety Week	25	26	27	28 Children and staff invited to dress in Red, Gold and sparkles and bring a bottle for the Christmas Fayre	29	30



Autumn Key Dates

December

December 2025

◀ month week ▶

Mon	Tue	Wed	Thu	Fri	Sat	Sun
1	2 Reception Educational Visit to Weston Park 'Festive Fun.' More info to follow	3	4 Christmas Fayre - Straight after school - in the school hall	5	6	7
8 EYFS Nativity Dress Rehearsal. 10am. Parents/Carers with young children invited today	9 Children's Theatre Performance coming into school. 'Rick Whittingham' All year Groups	10 EYFS Nativity Performance at 10am in the School Hall	11 End of Term Reports out to all school Children. Reception, Year 1 and Year 2. KS1 Nativity Dress Rehearsal. 9:30am Parents/Carers with young children invited today	12 KS1 Nativity Performances 10am and 1:30pm	13	14
15 Farm on Wheels Visit - EYFS meeting the nativity animals	16	17 Christmas Jumper Day -Children invited to wear a Christmas jumper to school Christmas Dinner Day - Telford and Wrekin catering Kitchen will be serving a delicious xmas dinner!	18	19 Carols around the tree. Parents and Carers invited. More info to follow Break up for the Christmas Break. Children return to school on Tuesday 6 Jan 2026	20	21 Christmas Break
22	23	24	25	26	27	28
Christmas Break						
			Christmas Day	Boxing Day		
29	30	31	1	2	3	4
Christmas Break						
5 Christmas Break PD Day.	6 Children return to school/nursery	7	8	9	10	11

This Week's Celebrations

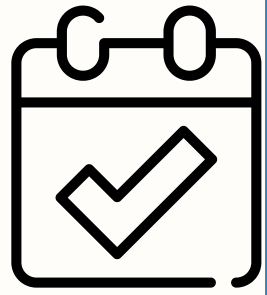
We selected all children to be part of celebration assembly this week as they have worked so hard at meeting our school expectations:



Well done everyone!



Attendance and Punctuality



This Weeks attendance cup winners:



Wrens and Sparrows

with 100% attendance

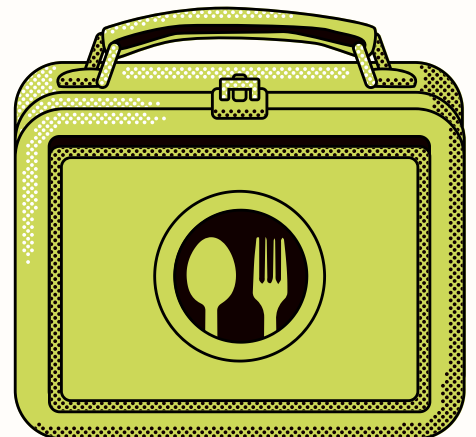


Golden Lunchbox

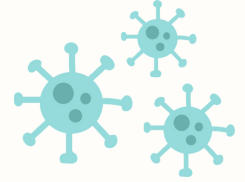
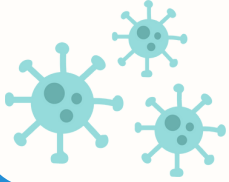


This week the golden lunchbox goes to:

Robins



Health Protection Hub Flu Vaccine



Why?

Flu is a common infection in babies and children. Children under the age of 5 have one of the highest hospital admission rates for flu compared to other age groups. Flu can be a very unpleasant illness in children, causing fever, extreme tiredness, aching muscles and joints, stuffy nose, dry cough and sore throat. Children usually begin to feel better within about a week. Complications of flu include acute bronchitis, painful ear infections and pneumonia. Some children may need to go to hospital for treatment, including intensive care.

Annual vaccination of children helps provide protection to each child and reduces the spread of flu to their families and the wider community, protecting others who are at increased risk of becoming seriously ill from flu. The flu vaccine also promotes a healthy working environment in nurseries and childcare settings by reducing the risk of flu being spread to others including staff.

Five reasons for getting your child vaccinated against flu:

1. Protect your child. The vaccine will help protect your child against flu and serious complications such as bronchitis and pneumonia
2. Protect you, your family and friends. Vaccinating your child will help protect more vulnerable friends and family
3. No injection needed. The nasal spray is painless and easy to have
4. It's better than having flu. The nasal spray helps protect against flu, has been given to millions of children worldwide and has an excellent safety record
5. Avoid costs. If your child gets flu, you may have to take time off work or arrange alternative childcare

Side effects of the nasal vaccine may commonly include a runny or blocked nose, headache, tiredness and some loss of appetite. Serious side effects are uncommon.

When, where, how?

The flu vaccine will be offered for free this autumn/winter to all children aged 2 or 3 years old on 31 August 2025.

It will be available from GPs from 1st September and from community pharmacies from 1st October.

It's a nasal spray which is painless and easy to have.

We'd therefore encourage you to get your child vaccinated when the offer opens in September.

More information is available here: <https://www.nhs.uk/vaccinations/child-flu-vaccine/>

If you'd like to discuss this further, please speak to your GP or email

HealthProtectionHub@telford.gov.uk

PODS Parent Carer Forum and Wrockwardine Wood Infants & Juniors PINS Project

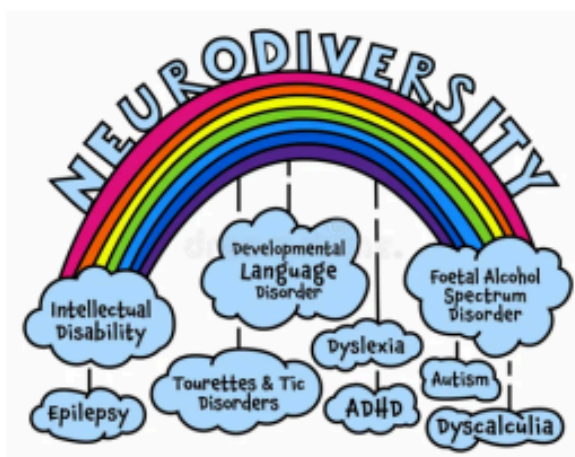
"Cuppa & Cake Session"

PINS (Partnership for Inclusion of Neurodiversity in School)

**Join us to talk about NeuroDiversity and
what support is available for your child
(even without a diagnosis)**

Share your experiences.

**Find out what is happening in school to
support your child.**



**2.15–3.15pm on
15 September
24 November
9 February**

REGISTERED CHARITY: 1150871

**15 September Cuppa and Cake will be held at
Wrockwardine wood Infant School.**

An Invite to lunch

This term we are delighted to invite you to join your child for lunch at school. This is a wonderful opportunity for you to:

- Spend quality time with your child in their school environment
- Sample the delicious, healthy, and well-balanced lunches provided by our Telford & Wrekin Catering Kitchen

As an added bonus – Wednesday is Roast Dinner Day, so you will get to enjoy one of the children's favourite meals!

The cost of Lunch only: £3.00 each and Lunch & pudding: £3.60 each. If your child is in receipt of the Pupil Premium Grant (PPG), we may be able to support with the cost. Please complete the reply form below and return it to school by Friday 12th September 2025, enclosing the correct amount if applicable.

We look forward to welcoming you and sharing this special experience together, please arrive at 11:45am to meet your child.

Wed 17.09.25 Wrens

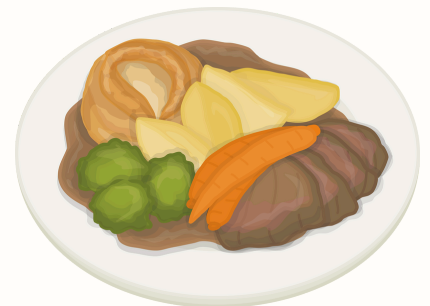
Wed 24.09.25 Robins & Sparrows

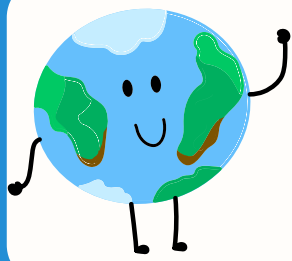
Wed 01.10.25 Swifts

Wed 08.10.25 Swallows

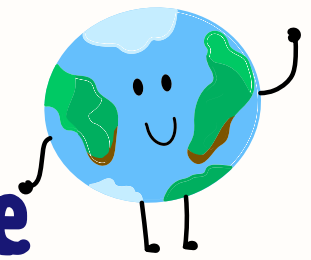
Wed 15.10.25 Chicks 1

Wed 22.10.25 Chicks 2





English as an Additional Language



Does Your Child Have Exposure to Another Language at Home?

At our school, we value and celebrate the rich cultural and linguistic backgrounds of our children and families. We are currently updating our records to ensure we know which children are considered EAL – English as an Additional Language.

What does EAL mean?

A child is considered EAL if they were **initially exposed** to a language other than English during **early development** and are **still** exposed to that language at home or in the wider community.

This could mean:

- Your child speaks another language at home
- Your child understands or hears another language spoken by family members (e.g. parents, grandparents), even if they respond in English
- Your household uses more than one language regularly

Why does this matter?

Letting us know if your child is exposed to another language helps us ensure the **right support is in place**. It also means the school may be able to **access additional funding** to help provide language and learning support tailored to your child's needs.

If your child has been exposed to another language at home or in their early years, even if they speak English fluently, please let us know by following the link or scanning QR code.

<https://forms.office.com/e/pNEK9UHfHJ>

English as an Additional Language
(EAL)



Breakfast and After School Club

We still have spaces available in our after-school sports clubs!

Monday – Dodgeball

Wednesday – Multi Sports

Thursday – Tennis

Friday – Gymnastics



All clubs are run by Mr Duncan, a qualified Crossbar Coach, who makes sessions fun, active, and engaging for all abilities.

A great way for children to build skills, stay active, and have fun with friends after school – don't miss out!

After School Club is now open to Reception Children

Sign up by clicking on the link or scanning QR Code

<https://forms.office.com/e/fGAYgpJHL4>



Breakfast Club



We still have places available in our Breakfast Club!

If you would like your child to join, please sign up using the link below:

<https://forms.office.com/e/8U1zEN8hjz>



Telford and Wrekin

FAMILY HUBS

Right help at the right time

Being a parent is one of the most difficult tasks there is; most families need support at times to help their children and young people thrive, and our ambition is for every family in our borough to receive the right help and the right time, with our community offer having a particular focus on providing advice and assistance at the earliest possible stage as and when challenges arise.

Our Family Hubs offer has expanded, and we are pleased to share the latest developments and opportunities available to families.

We offer daily drop-in sessions across Telford where families can access support without the need for referrals or pre-booked appointments. Parents and carers are very welcome to attend if they are looking for information, advice, support or guidance around any aspect of family life. Should our friendly practitioners not have an immediate answer, we will follow up with them promptly. The drop-in locations and times are as follows:

Monday: Dawley Town Hall, 10:00am – 12:00noon

Tuesday: Silver Birch Family Hub, Sutton Hill / Hub on the Hill (alternate weeks) 10:00am – 12:00noon (term time)

Wednesday: Southwater Library (Children's Section), 09:30am – 12:00noon

Thursday: Arleston Community Centre, Wellington, 10:00am – 12:00noon

Thursday: The Hub, Newport, 10:00am – 12:00noon

Friday: Donnington Community Hub (Damson Family Hub), 9:30am – 11:30am

Later in the term, commencing 5th November we will also be offering a Drop In at the Wakes, Oakengates 1-2.30pm. Please do encourage any families who may benefit to attend these sessions. You are also very welcome to support a parent along to one of the Drop In's if you feel they need this to be able to access our service.



Talk Pants Week

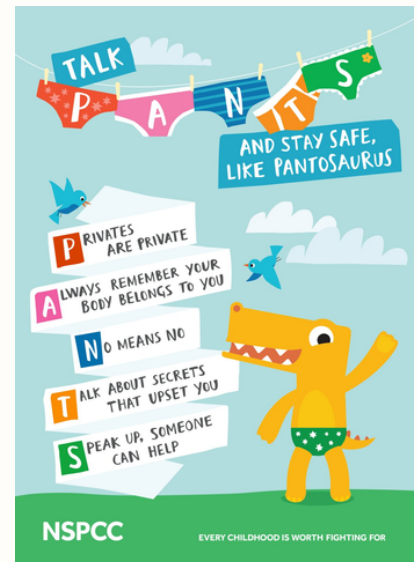
20-24 October 2025



Our federation are taking part in the Telford Talk PANTS Week. Talk Pants Week is based on the NSPCC's Talk PANTS campaign, a child safety initiative. The campaign uses the friendly mascot Pantosaurus and the easy-to-remember PANTS acronym to help you teach your child how to stay safe from sexual abuse.

The PANTS rules for children:

**Click on the PANTS
Picture to access the
NSPCC website**



Helpful Resources for Parents:

- Main Talk PANTS Page: Find the essential guides, videos, and information on the NSPCC's Talk PANTS webpage.
- Pantosaurus Song: Watch the fun and catchy Pantosaurus video on YouTube to help introduce the rules.
- Parents' Guide: Download the official Parents' Guide for detailed tips on how to have these conversations.

**Click on Pantosaurus
to access the song!**



2026 School Admissions now Open



Applying for Primary school places

Parents and carers of children who are due to start primary, junior or secondary school next September can now apply for their school place.

Children born between September 2021 and August 2022 will be due to start primary school in September next year (2026).

To ensure those children are allocated a school place, parents and carers must have applied to Telford & Wrekin Council by 15 January 2026.

Parents and carers of children moving from an infant to junior school (moving from years two to three), must also apply for their child's place by the 15 January 2026.

Children born between September 2014 and August 2015 are due to start secondary school next year and parents and carers have until 31 October 2025 to apply for their school place.

More information on applying for a school place is available at <https://www.telford.gov.uk/schools-and-learning/school-admissions/>

Watch a quick easy guide to primary school admissions - <https://www.youtube.com/watch?v=WgA7iZSgHlk>

Watch a quick easy guide to secondary school admissions - <https://www.youtube.com/watch?v=65rpJarFWr0>



Telford & Wrekin
Co-operative Council

Protect, care and invest
to create a better borough



Apply online NOW



Starting school?

Closing date for applications:

15 January 2026

If your child has an Education, Health & Care Plan (EHCP) the closing date is **31 October 2025**.

www.telford.gov.uk/admissions

- You **must** apply if your child was born between 1 September 2021 – 31 August 2022.
- You **must** apply even if your child is attending a nursery or pre-school on a school site or you have a child already attending the school.
- You are advised to list four schools on your application form, including your catchment area/nearest school.
- Attending a nursery does **not** guarantee a school place.
- School places are allocated in line with oversubscription criteria.
- See website for more information **www.telford.gov.uk/admissions** or contact School Admissions at **admissions@telford.gov.uk**





Online Safety Information



Want to help your child stay safe while gaming or using social platforms? Check out the "What Parents and Carers Need to Know" posters! 🎮📱

They are packed with quick, essential info about a range of popular online games and platforms, perfect for staying informed and starting important conversations at home.



 YouTube Kids

 YouTube


TikTok

Click on the images to access information and advice you will find more on our online safety webpage