



Wrockwardine Wood Infant School and Nursery Newsletter

'Love, Laugh, Learn'

25 October 2024. Autumn Term: Week 8

A Message from the Headteacher

Dear Parents and Carers,

...and just like that, we find ourselves at the end of the first half of the autumn term, and my very first term as Headteacher! I want to take this opportunity to say a huge thank you to everyone for being so welcoming. Your warmth and support have been really appreciated, and it's been a pleasure to continue to get to know the children, families, and staff who make this school such a special place.

This half term has been filled with exciting events and learning opportunities. A particular highlight has been the amazing experience our Year 2 children enjoyed at the residential in Edgmond Hall. The children had an unforgettable time, making memories that will stay with them for years to come. From outdoor activities that fostered teamwork and resilience to moments of reflection and fun with their peers, the residential was such a valuable experience for many reasons. It gave our children the chance to challenge themselves, step outside their comfort zones, and grow in confidence—and they did just that!

Closer to home, it has also been wonderful to see our children engaging with the world around them through cultural learning. This week, the children had the chance to experience the joy of Diwali first-hand, immersing themselves in the celebration of the Festival of Light. The sounds and energy of bhangra dancing filled our hall, and the children had a fantastic time learning both about the significance of Diwali and the vibrant cultural expressions that come with it. These are the moments that enrich their understanding of the diverse world we live in, and it's a joy to see their curiosity come to life.

As we approach the break, I want to thank you again for your ongoing support. Wishing you all a restful and enjoyable half term, and I look forward to welcoming everyone back soon for the second half of this exciting term.

Kind regards,

Mrs Jenny Gascoigne
Executive Headteacher



Halloween and Firework Safety

Over Halloween and bonfire night/Diwali we want you and your children to have fun but stay safe. StayWise has some great advice to celebrate Halloween safely.

<https://staywise.co.uk/public/resource/halloween-safety-advice>

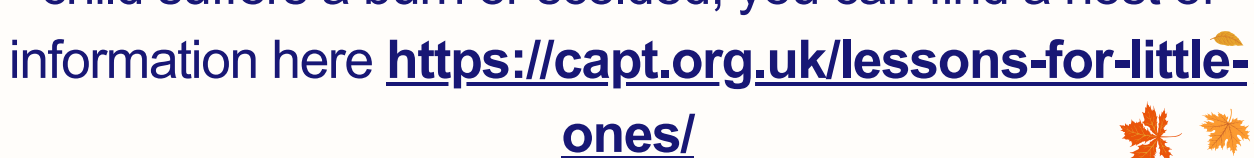
Bonfire night can be great fun but it can also be very dangerous. Please stay a safe distance away from the fire and the fireworks.

If your clothes do catch fire remember to stop, drop and roll. You can find more information on what to do here:

<https://staywise.co.uk/public/resource/stop-drop-and-roll-poster>

Did you know that the Child Accident Protection Trust (CAPT) has some great advice on how to keep your children while celebrating Bonfire Night and Halloween?

Whether you're concerned about teaching your children the dangers of fireworks, or not sure what to do if your child suffers a burn or scolded, you can find a host of information here **<https://capt.org.uk/lessons-for-little-ones/>**





Attendance and Punctuality



Attendance award



This week the attendance cup winner is:

Chicks 2

96% attendance

Well done!

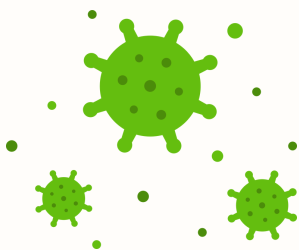


Attendance Updates

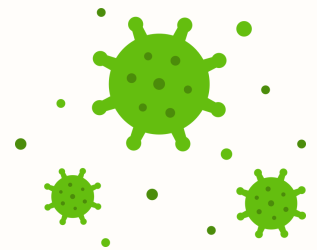
Do you ever think:

'Should I keep my child off school?'

Click the UK Health Security Agency image below to find out more.



Should I keep my
**child off
school?**



Christmas Performances



With only 8 weeks until Christmas, we are busy planning and preparing for all the wonderful festivities, including our Christmas Nativity performances! We are excited to announce that both EYFS and Key Stage 1 will be showcasing their performances this year:

- EYFS (Nursery and Reception) will be performing ***'The Nursery Rhyme Nativity'***
- Key Stage 1 (Year 1 and Year 2) will be performing ***'Simply the Nativity.'***

Please note:

- Parents and carers with young children are invited to attend the dress rehearsals.
- The main performances are reserved for parents/carers/adults only.

EYFS/Nursery and Reception <i>The Nest, Chicks 1, Chicks 2</i>	Monday 9 December 2024 10.00am	EYFS Nursery Rhyme Nativity DRESS REHEARSAL ✓ <i>Parents and carers with young children to attend today.</i>
	Tuesday 10 December 2024 10.00am	EYFS Nursery Rhyme Nativity MAIN PERFORMANCE ✓ <i>Parents/Carers/Adults Only</i>
Key Stage /Year 1 and Year 2 <i>Robins, Wrens Swifts, Swallows.</i>	Wednesday 11 December 2024 10am	KS1 'Simply the Nativity' DRESS REHEARSAL <i>Parents and carers with young children to attend today.</i>
	Thursday 12 December 2024 2pm	KS1 'Simply the Nativity' MAIN PERFORMANCE <i>Parents/Carers/Adults Only</i>
	Friday 13 December 2024 2pm	KS1 'Simply the Nativity' MAIN PERFORMANCE ✓ <i>Parents/Carers/Adults Only</i>

Parent's Views

At Wrockwardine Wood Infant School and Nursery, we are always looking to improve the experience we offer to both our children and their families. We are still collecting feedback and would love to hear your thoughts on your experience of the induction process at our school.



Your views are incredibly valuable to us as we continue to refine and enhance the way we welcome new families to our school community. Please take a few minutes to share your feedback by completing a short questionnaire. You can access the form by clicking the link below:

<https://forms.office.com/e/WTFuGkqmqX>

Thank you for your time and support in helping us make
Wrockwardine Wood Infant School and Nursery
the best it can be!

Pre-Loved Uniform Sale



Sale



We are delighted to share that our recent preloved uniform sale was a great success, thanks to your support!

We are excited to announce that we will now be holding this sale on a monthly basis.
Next Sale: Friday 8 November at 3:10pm
in the school hall.

As a school, we are passionate about sustainability, and offering preloved uniforms is one of the ways we can reduce waste and promote a more eco-friendly approach. Not only does it benefit the environment, but it also makes quality uniforms more accessible to all.

If you have any donations of old uniforms in good condition, we would greatly appreciate your contributions to help continue this initiative.

Thank you for being part of this important effort!



**Click on the image to
access our page**

Important reminders.

Reporting your child's absence.

Please call the school office on **01952 387860** before **8:40am**.

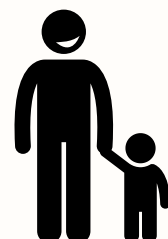
Should you require to collect your child early from school for an appointment could

you please bring an appointment card or letter into the school office.



Collections.

In order to keep your child safe if we have not been notified in advance of any change in collection arrangements we will not allow your child to leave without contacting you first.





Early Help



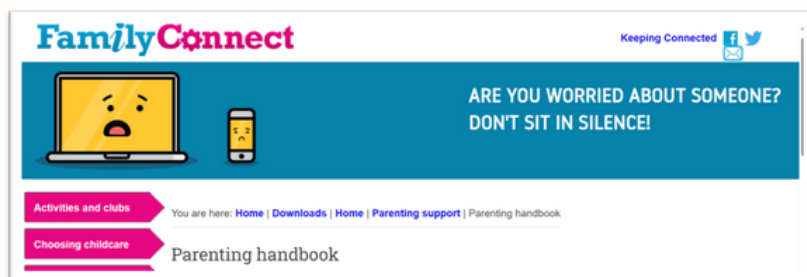
'There are no problems we cannot solve together, and very few we can solve by ourselves.'

Did you know?

The Family Connect website have Parenting handbook.

The parenting support handbook is a guide for parents and carers of children and young people in Telford and Wrekin. It will give you practical advice and guidance.

Click on the image to access the download page.



Meet our Learning Mentor

Hello! My name is Miss Teale, and I am delighted to introduce myself as the Learning Mentor here at Wrockwardine Wood Infant School and Nursery.

My role is to support the wellbeing, emotional development, and learning of all our children, as well as to offer guidance and help to families where needed.

I am here to support children in many ways, whether it's building confidence, managing feelings, or developing positive friendships. I work closely with the teaching staff to ensure that every child feels happy and supported in school. For families, I can provide a listening ear, advice on managing challenges at home, or even point you in the direction of extra support.

If you think your child would benefit from some additional help or you'd like to have a chat, please feel free to get in touch through the school office or catch me on the playground.

I look forward to meeting you and working together to ensure that every child thrives.

Best wishes,

Miss Teale

Learning Mentor



Miss Teale
Learning Mentor and
Attendance Champions



Mrs Gascoigne
Executive Headteacher &
Early Help Lead

WOW

The Walk to School Challenge



We are excited to introduce the **WOW Travel Tracker** at our school as part of the WOW Walk to School Initiative. This innovative program encourages children to walk to school and rewards them for their active travel choices. Each day, children will log how they travel to school, and those who walk, cycle, or scoot at least once a week will receive special badges to celebrate their efforts.

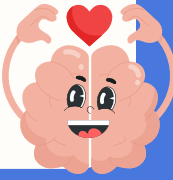
Not only does this initiative help keep our children active and healthy, but it also teaches them about the importance of sustainable travel. Every step counts towards creating healthier lifestyles and a cleaner environment.

We encourage everyone to join in and make a positive impact by choosing an active way to travel whenever possible. Let's work together to make our school a healthier and greener place!

Click on the image below to find out more.



Sports and Wellbeing



After School Club Interest for Key Stage 1

(Year 1: Wrens and Robins; Year 2: Swallows and Swifts)

I am delighted to share the exciting news that Crossbar Coaching will be delivering after-school clubs for our Year 1 and Year 2 children, led by a trained Crossbar coach.

Following the feedback from our recent parent survey, we are pleased to offer two of the most popular choices: Multi-Sports and Football. These clubs will provide children with a fantastic opportunity to stay active, develop key skills, and enjoy a range of sports.

Here are the details:

- Multi-Sports Club: Mondays, 3:15 PM - 4:15 PM
- Football Club: Thursdays, 3:15 PM - 4:15 PM
- Cost: £3.50 per session (*£21 for the full 6 weeks*)
- Start date: Week commencing Monday 11th November
- Duration: 6 weeks

We kindly ask parents/carers to book for the full 6-week course. Due to limited spaces, there are only 15 places per session, which will be allocated on a first-come, first-served basis. A waiting list will be in place for those who do not initially secure a spot.

Please click here to access the our latest communication regarding the After School Clubs.

<https://www.wrockwardinewoodinfant.org.uk/media/33557/crossbar-initial-letter-211024.pdf>

Best wishes,

Miss Bilton
PE Subject Lead

Parent Coffee Morning

Please let us know if you can make the coffee morning by clicking on the link: <https://forms.office.com/e/K2Qp7A4sxH>



The poster features a brown apron shape in the center. At the top of the apron are three icons: a green speech bubble with a heart on the left, a cup of coffee with a heart on the right, and another green speech bubble with a heart on the right. The text 'JOIN US FOR A PARENT'S COFFEE MORNING' is written in large, bold, white capital letters across the chest of the apron. Below this, in smaller white text, it says 'We're excited to welcome two special guests from the School Nursing Team!'. Further down, it says 'Join us for an informative and supportive session focusing on essential topics for parents of young children:'. Then, two topics are listed: 'Healthy Eating' with a fork and knife icon, and 'Sleep Solutions' with a zzz icon. Each topic is followed by a brief description. At the bottom of the apron, it says 'This is a wonderful opportunity to connect with other parents, share experiences, and gain valuable insights!'. The bottom of the poster has a dark green wavy border. On the left is a circular school logo. To the right of the logo, the date and time 'Wednesday 6th November 2024 9-10:30am. In the School Hall.' are written in large white text. Below this, a white rounded rectangle contains the text 'Refreshments will be provided.' in black.

**JOIN US FOR A PARENT'S
COFFEE MORNING**

We're excited to welcome two special guests from the
School Nursing Team!

Join us for an informative and supportive session
focusing on essential topics for parents of young
children:

-  **Healthy Eating**
Learn tips and strategies for nourishing your child as they
grow!
-  **Sleep Solutions**
Discover helpful advice on establishing healthy sleep
routines for your child.

This is a wonderful opportunity to connect with other
parents, share experiences, and gain valuable insights!

 **Wednesday 6th November 2024
9-10:30am. In the School Hall.**

Refreshments will be provided.



Date	Key Dates
25 October	Last Day of Autumn first half term
28 Oct -1 Nov	Half term
4 November	Return to School
11 November	Flu Vaccine
11 November	Remembrance Day
11-15 November	Anti-Bullying Week/Friendship week
12 November	Odd Sock day - please wear odd socks to school. https://anti-bullyingalliance.org.uk/anti-bullying-week-2024-choose-respect/odd-socks-day/what-odd-socks-day
13 November	World Kindness Day
15 Novemeber	Children in Need <i>Children and staff are invited to come to school in something yellow, or spotty or both! Donations welcome for Children in need.</i>
18-22 November	World Nursery Rhyme Week
21 November	Progress reports out to parents
W/C 25 November	The Nest/Nursery Parent Carer Stay and Play sessions <i>More details to follow</i>
W/C 25 November	Parent/Teacher Consultations - Reception, Year 1 and Year 2 <i>More details to follow</i>
29 Novmeber	Non uniform day - bring a bottle for the bottle tombola at the Christmas Fayre.
6 December 3:15-5:30pm	Friends of Wrockwardine Wood Christmas Fayre



Don't forget to find out about your child's learning this week from the class page on the website.



Go to: <https://www.wrockwardinewoodinfant.org.uk>
and click on the 'Classrooms' tab

**Term
Dates
for more
term dates
please here.**



Poppies on Sale After Half Term

After half term, we will be supporting the Royal British Legion Poppy Appeal by selling poppies in school. Children are welcome to bring in a small donation if they would like to purchase a poppy. Selected Year 2 children will come around during Storytime to offer poppies to the classes, and a member of staff will also be available on the playground at the end of the day for parents and carers who would like to contribute.

Thank you for your support in helping us remember and honor those who have served.



Some upcoming learning events



School Admissions 2025



Reception & Junior Applications



For Reception or those transferring from Infant to Junior (Year 3) in September 2025, applications will be available via the Telford & Wrekin website from **12th September 2024**.

All parents will need to apply via the parent portal.

How to apply for a place in Year 3 in September 2025 (Infant to Junior transfer)

As your child is attending an infant school, you will need to apply for a junior school place in Year 3 for September 2025. To apply for a junior school place you must apply online at www.telford.gov.uk/admissions.

The closing date for all applications is **15 January 2025** or **31 October 2024** for children with an Education, Health and Care Plan. If you do not have access to a computer, you can go to your local library and use their computer facilities.

You can find out more information on www.telford.gov.uk/admissions where you will be able to find our Guide to Primary School Admissions.

Alternatively, please contact School Admissions at admissions@telford.gov.uk



Starting School?



How to apply for a Reception Place for September 2025

Please scroll to the next page...



Online Safety



1 I only go online with a grown up



2 I am kind online



3 I keep information about me safe

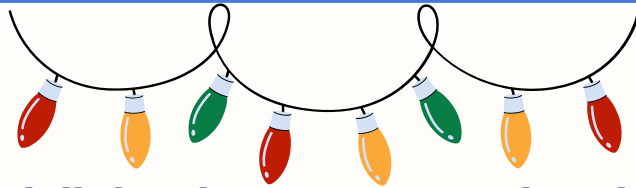


4 I tell a grown up if something online makes me unhappy





The Friends of Wrockwardine Wood Christmas Fayre



We are delighted to announce that the Friends of Wrockwardine Wood Infant School and Nursery PTFA are busy organising a fantastic Christmas Fayre!

This festive event will take place on:

Friday 6 December from 3:15-5:30pm

To help support the Fayre, we will be holding a non-uniform day on **Friday 29 November**. On this day, we kindly ask that children come to school in non-uniform and bring a bottle for our bottle tombola.



Additionally, we are reaching out to local businesses for raffle prize donations. If you know of any local business that might be able to donate a prize, we would really appreciate your help in connecting us with them.



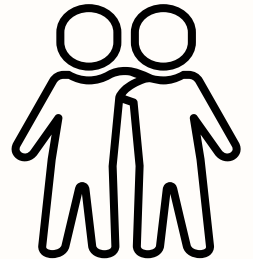
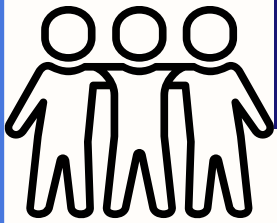
Thank you for your ongoing support. We're looking forward to a wonderful, festive event and hope to see you all there!



The Friends of Wrockwardine Wood PTFA

FRIENDS

FRIENDS



Are you interested in getting more involved in school life and helping to make a difference for our children?

If so, we would love to invite you to join our PTFA –
**The Friends of Wrockwardine Wood Infant School
and Nursery.**

The PTFA plays a vital role in organising events, raising funds, and supporting our school community in many ways. Whether you can give a little time or a lot, your help and ideas are always welcome! It's a great way to meet other parents, get involved in fun activities, and make a positive impact on our children's experience at school.

If you would like to join or learn more, please register your interest by completing the MS form by clicking on the link:

<https://forms.office.com/e/24HRg5kK0H>

We look forward to hearing from you!